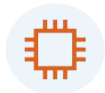


# FD704GW-DAX-R711

## 4GE+CATV+2WIFI XPON ONU



High Speed CPU



Low Power Consumption



Software Customization



Optional Shell Supply



### Brief Views

The FD704GW-DAX-R711 dual-mode ONU optical interface supports EPON and GPON access. The ONU automatically recognizes the central office OLT mode (GPON or EPON) and activates the corresponding PON mode, thereby completing GPON or EPON adaptive access.

FD704GW-DAX-R711 is a dual-mode ONU designed to meet the needs of radio and television operators for FTTH fiber-to-home multi-service reception. This product integrates Gigabit Ethernet through mature, stable and cost-effective Gigabit XPON technology Switching technology, WDM technology, HFC technology, have the characteristics of high bandwidth, high reliability, easy management and good quality of service (QoS) guarantee. The functions and performance indicators of the equipment meet ITU-T, IEEE related recommendations, relevant international standards and technical specifications of industry standards, and have good compatibility when used with mainstream manufacturers' central office OLTs.



## Functional Feature

- Single-fiber access, provides internet, CATV, WIFI multiple service
- In compliant with ITU - T G. 984 and IEEE802.3ah standard
- Support ONU auto-discovery/Link detection/remote upgrade of software
- Support VLAN transparent, tag configuration
- Support multicast function
- Support DHCP/Static/PPPOE internet mode
- Support port-binding
- Support data encryption and decryption function
- Support Dynamic Bandwidth Allocation (DBA)
- Support MAC filter and URL access control
- Support remote CATV port management
- Support power-off alarm function ,easy for link problem detection
- Specialized design for system breakdown prevention to maintain stable system
- EMS network management based on SNMP ,convenient for maintenance

## Product Interface and LED



## LED Definitions

Indicator		Description
PWR	Power status	On: The ONU is power on Off: The ONU is Power off
PON	ONU Register	On: Success to register to OLT Blinking: In process of registering to OLT Off: Failed to register to OLT;
LOS	PON optical signals	On: Optical power lower than receiver sensitivity ; Off: Optical in normal
INT	Internet status indicator	On: The routed WAN Internet access service is normal. Off: The routed WAN Internet access service is abnormal.
LAN1-4	LAN port status	On: Ethernet connection is normal Blinking: Data is being transmitted through the Ethernet port Off: Ethernet connection is not set up
WIFI	WIFI	Blinking: Data is being transmitted On: WIFI function Opens
CATV	CATV status	On: CATV optical normal Off: The CATV signals are not received
OPT	Light intensity indicator	On: Higher than ONU RX maximum threshold; Flashing: Lower than ONU RX minimum threshold; Off: ONU RX is within the normal threshold range.

## Hardware

### ● GPON/EPON Port

- Single mode single fiber
- GPON: FSAN G.984.2 standard, Class B+
- EPON: 1000BASE-PX20+ symmetric
- GPON: 2.488Gbps/1.244Gbps downstream/upstream
- EPON: 1.25Gbps downstream/upstream
- Wavelength :  
Transmit: 1310nm    Receiver: 1490nm
- Receiving sensitivity :  
GPON: -28dBm    EPON: -27dBm
- Saturated power :  
GPON: -8dBm    EPON: -3dBm
- Transmitting power :  
GPON: 0.5~5dBm    EPON: 0~4dBm

### ● User Port(LAN)

- RJ-45 connector
- 4\*10/100/1000 Mbps adaptive Ethernet port
- Full/half duplex
- Auto MDI/MDI-X

### ● WIFI performance parameters

- IEEE802.11b/g/n(2.4G)
- IEEE802.11a/n/ac(5G)
- Max rate: 300M(2.4G)
- Max rate: 867Mbps(5G)
- MAX TX power 2.4G:17dBm
- MAX TX power 5G:17dBm

### ● Dimension and Weight

- Item Dimension:
- 103mm(L) x 56mm(W) x 115mm (H)
- Item weight: 0.243kg

### ● Indicators

- PWR/PON/LOS/INT/LAN1-4/CATV/WIFI/OPT



- **CATV (Input /Output port)**

- Wavelength: 1550nm
- Input optical power: -18dBm~0dBm(with AGC)
- RF frequency: 47MHz~1000MHz
- RF output level: 78dBuV (@-12~-2dBm@85MHz) (with AGC)
- RF output return loss: >12dB(with AGC)
- RF impedance: 75 Ω

- **Environmental Specifications**

- Operating temperature: 0 to 40° C
- Storage temperature: -40 to 85° C
- Operating humidity: 10% to 90%(Non-condensing)

- **Power**

- External 12V/1A DC power supply adapter
- Power consumption: <8.4W

## Software

---

- **Management**

- EPON :OAM / WEB / TR069 / Telnet
- GPON:OMCI / WEB / TR069 / Telnet

- **L3**

- IPv4/IPv6 Dual Stack
- NAT
- DHCP client/server
- PPPOE client/ Pass through
- Static and dynamic routing

- **Switch**

- MAC address learning
- MAC address learning account limit
- Port flow control
- Broadcast storm suppression
- VLAN transparent/tag
- Port-binding

- **Multicast**

- IGMP V2
- IGMP VLAN
- IGMP transparent/Snooping/Proxy

- **Security**

- Firewall
- MAC address/URL filter
- Remote WEB/Telnet access control

- **Register**

- Auto-discovery/Link detection/Remote upgrade software
- Auto/MAC/SN/LOID+Password authentication



## Application

- Typical Solution: FTTH
- Typical Business: Internet, CATV, Wi-Fi

